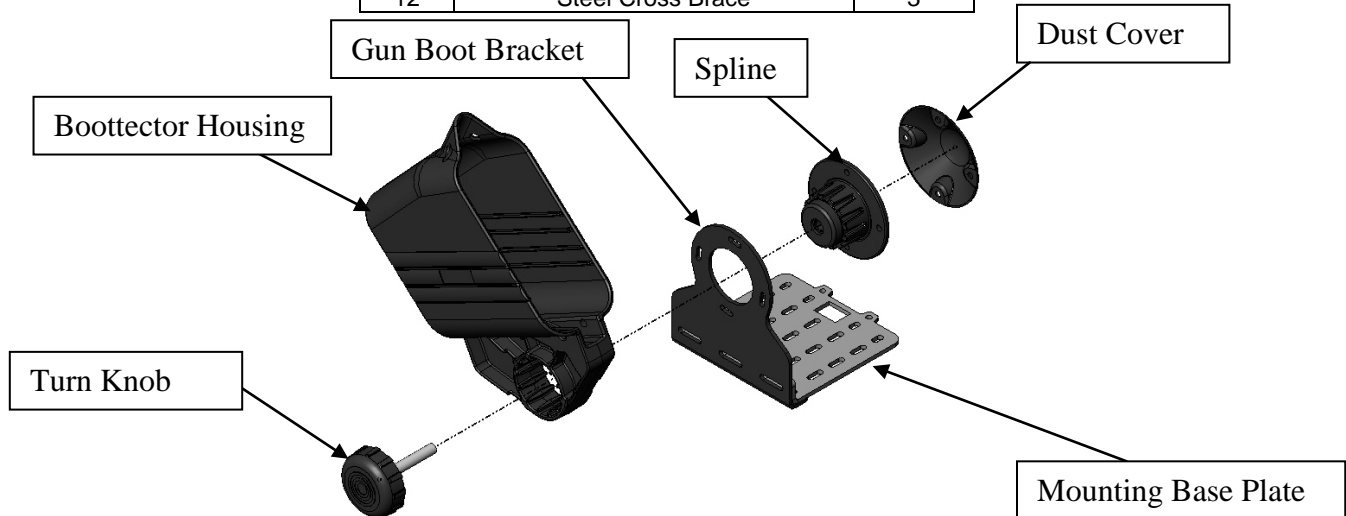




20035 – Boottector Bracket

NO.	Description	QTY.
1	Gun Boot Bracket	1
2	Mounting Base Plate	1
3	Dust Cover	1
4	Spline	1
5	Turn Knob	1
6	Locking Pin	2
7	1/4" – 20 U-Bolt	3
8	1/4" – 20 x 1.00" Truss Head Bolt	6
7	1/4" - 20 x 2.00" Truss Head Bolt	6
8	1/4" - 20 Nylon Nut	12
9	1/4" Washer	8
10	Rubber Caps	6
12	Steel Cross Brace	3



ATV Bracket Assembly Instructions:

1. As shown above, attach the Mounting Base Plate to the Gun Boot Bracket using the (2) 1/4" x 1.00" Truss Head Bolt, (2) 1/4" Washers and (2) 1/4" Nylock Nuts, making sure the Washers and Nuts go together. Tighten securely.
2. Attach the Mounting Base Plate to your ATV using (3) 1/4" U-Bolts, (6) 1/4" Washers, and (6) 1/4" Nylon Nuts. Once secure, place the rubber caps on the exposed threads of the U-Bolts. For composite racks, use the 2" hex head bolts, cross over washers, and nuts to secure firmly to the ATV.
3. Now, insert the Spline through the Gun Boot Bracket as shown above in the illustration.
4. Place the Dust Cover on the Back Side of the Spline. Attach the Gun Boot Bracket to the Spline and the Dust Cover using (4) 1/4" x 1.00" Truss Head Bolts, and (4) 1/4" Nylon Nuts, with the Nylock Nuts on the back side of the Dust Cover. Do not fully tighten, as the spline is adjustable in the slotted bracket for fine-tuning the angle of the Gun Boot to your ATV.
5. Attach the Boottector Housing on the spline at the desired angle. At this point, you can make small adjustments by rotating the Boottector and letting the mounted spline assembly move slightly in the slots. When you get to the desired location, take the Gun Boot off the spline and tighten the (4) bolts holding the spline assembly to the bracket. Thread the Turn Knob into the spline and tighten the Boottector on the mount.

NOTE: Rubber caps are used to cover threads on hardware to prevent cutting hands.

Kolpin Outdoors, Inc.
 205 N. Depot Street, Fox Lake, WI 53933
 Phone #: (877) 9KOLPIN or (920) 928-3118
www.kolpin.com customerservice@kolpin.com